

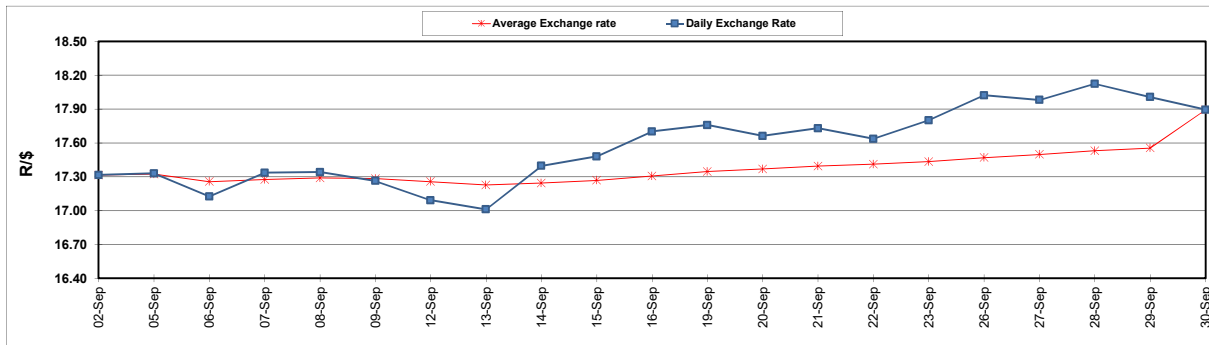
	PETROL 95 ULP	PETROL 93 ULP & LRP	DIESEL 0.05%	DIESEL 0.005%	ILL. PAR.
GAUTENG PUMP PRICE (SA c/l) AS FROM 05/10/2022	2,236.000	2,206.000	-	-	-
WHOLESALE PRICE (SA c/l) AS FROM 05/10/2022	-	-	2,406.100	2,430.500	1,699.288
SINGLE NATIONAL MAXIMUM RETAIL PRICE	-	-	-	-	2,240.000
BASIC FUEL PRICE - 30/09/2022 (SA c/l)	1,185.131	1,159.493	1,505.022	1,525.096	1,417.494
PRESS RELEASE CONTRIBUTION TO BFP 30/09/2022 - 30/09/2022 (SA c/l)	1,247.750	1,204.750	1,513.630	1,533.030	1,542.128
UNIT OVER/(UNDER) RECOVERY - 30/09/2022 (SA c/l)	62.619	45.257	8.608	7.934	124.634
AVERAGE BASIC FUEL PRICE 30/09/2022 - 30/09/2022	1,185.131	1,159.493	1,505.022	1,525.096	1,417.494
AVERAGE UNIT OVER/(UNDER) RECOVERY 30/09/2022 - 30/09/2022	62.619	45.256	8.608	7.934	124.634

### ANALYSIS MOVEMENT OF AVERAGE OVER/(UNDER) RECOVERY

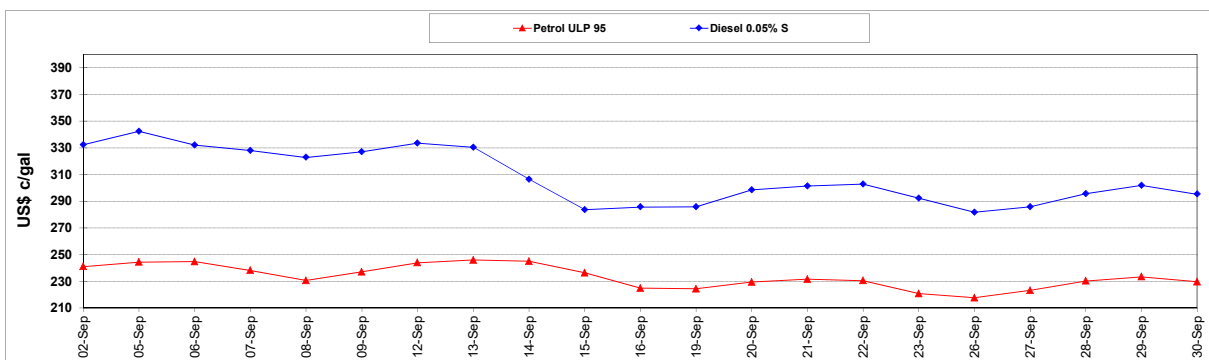
	PETROL 95	PETROL 93	DIESEL 0.05%	DIESEL 0.005%	ILL. PAR.
- MOVEMENT IN INTERNATIONAL PRODUCT PRICES	55.134	37.934	(0.897)	(1.698)	115.682
- MOVEMENT IN EXCHANGE RATE	7.485	7.323	9.505	9.632	8.952
AVERAGE UNIT OVER/(UNDER) RECOVERY 30/09/2022 - 30/09/2022	62.619	45.256	8.608	7.934	124.634

### R/\$ EXCHANGE RATE - (R/\$17.8925 - 30/09/2022)

#### EXCHANGE RATE USED IN BASIC FUEL PRICE



#### INTERNATIONAL PRODUCT PRICES OF BASKET USED IN BASIC FUEL PRICE



#### BASIC FUEL PRICE IN SA CENTS PER LITRE

